

MONTHLY MEMBERSHIP PROGRESS REPORT

District N 2

Results as of: 5/31/2026

GMT:

LOCATION NOVA SCOTIA

GMT CA

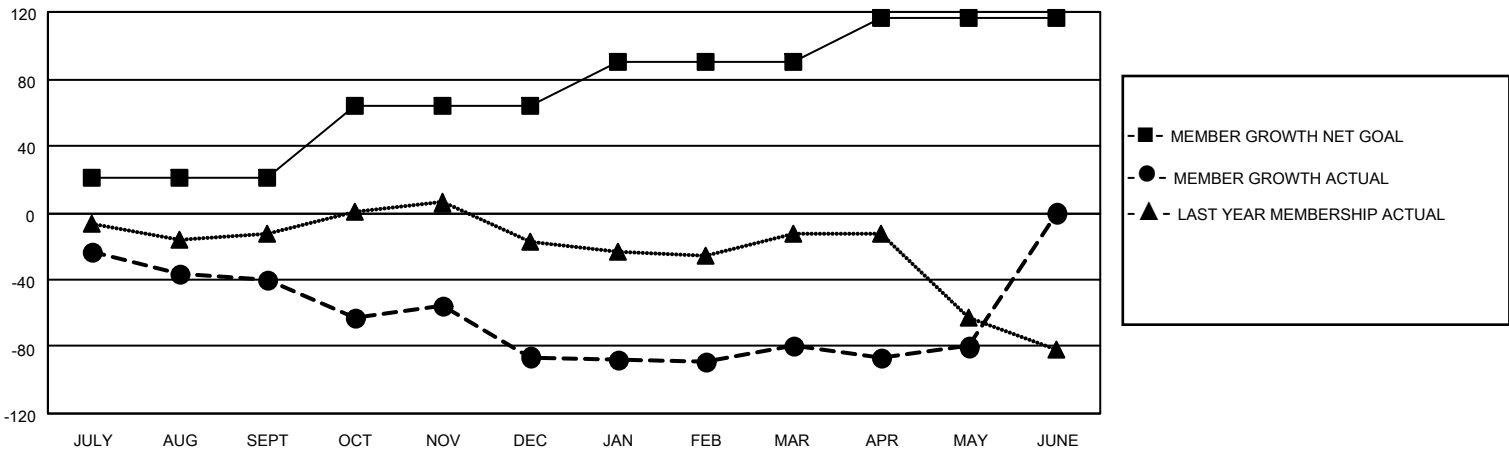
Clubs			
RESULTS FOR 2025-2026			
QUARTER	NEW CLUB GOAL	NEW CLUBS	DROPPED CLUBS
JULY/AUG/SEPT	0	0	0
OCT/NOV/DEC	0	0	2
JAN/FEB/MAR	1	0	1
APR/MAY/JUNE	0	0	0

Members			
RESULTS FOR 2025-2026			
QUARTER	MEMBER GROWTH NET GOAL	MEMBER GROWTH ACTUAL	DROPPED MEMBERS ACTUAL (including transfers)
JULY/AUG/SEPT	21	35	60
OCT/NOV/DEC	43	65	96
JAN/FEB/MAR	26	60	46
APR/MAY/JUNE	26	35	30

GOALS AND ACTUAL NEW CLUBS CUMULATIVE



GOALS AND ACTUAL MEMBERS CUMULATIVE



DROPPED CLUBS: 3	
DROPPED MEMBERS	
DECEASED	33
CLUB CANCELLED	11
OTHER	188
TOTAL	232

42 CLUBS OF 65 ADDED 1 OR MORE NEW MEMBERS

GENDER DISTRIBUTION	
MALE	837 (56.21%)
FEMALE	653 (43.85%)

[CLICK HERE FOR CUMULATIVE MEMBERSHIP DATA](#)

TOTAL FAMILY UNIT MEMBERS	262
FAMILY MEMBERS PAYING HALF DUES	133